

Create and restore backup Wrap Boards CF images

Version 1.1

Table of Contents

<u>Introduction.....</u>	<u>2</u>
<u>Requirements.....</u>	<u>2</u>
<u>Creating backup images.....</u>	<u>3</u>
<u>Step 1.....</u>	<u>3</u>
<u>Step 2.....</u>	<u>3</u>
<u>Step 3.....</u>	<u>4</u>
<u>Step 4.....</u>	<u>4</u>
<u>Restoring backup images.....</u>	<u>5</u>
<u>Step 1.....</u>	<u>5</u>
<u>Step 2.....</u>	<u>5</u>
<u>Step 3.....</u>	<u>5</u>
<u>Step 4.....</u>	<u>5</u>

Introduction

This document will explain how to backup CompactFlash disks and how to restore them in case of failures from Windows XP.

Requirements

- USB 2.0 Compact Flash Reader
- [WinImage](#)

When creating this document all test were made using an USB 2.0 Hama Multi Card Reader and WinImage 8.0 Professional for creating and restoring images.

NOTE: WinImage Standard Mode does not have virtual disk image operations activated.

Creating backup images

Step 1

PowerOff the computer and remove CF disk and then install it into Compact Flash Card Reader.

Please make sure that CF is correctly being detected and installed: Right click on “*My Computer*” -> “*Manage*” select “*Disk Management*” under “*Storage*” tree. You should be able to see there a removable disk with a capacity of 122MB.

If you do not see this, then check you USB card reader, USB drivers to correct the problem.

Step 2

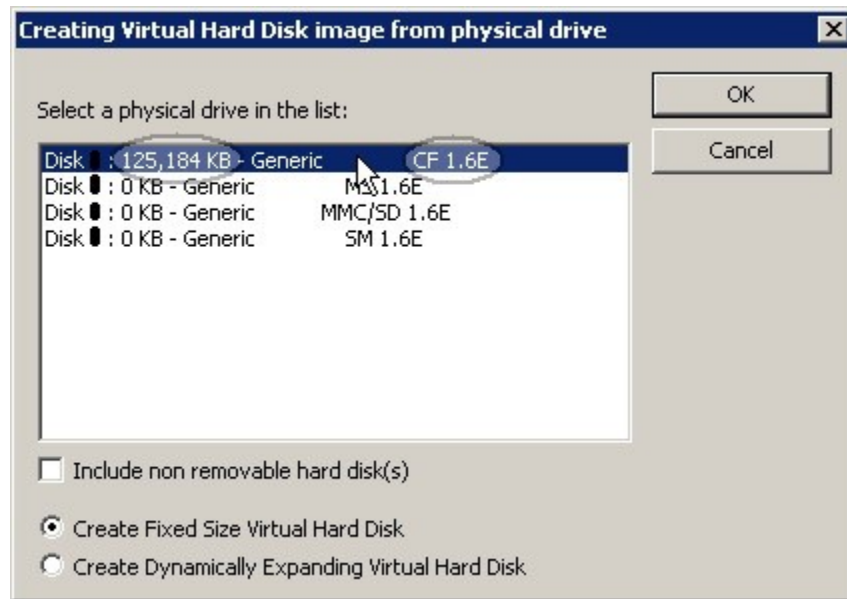
Open WinImage. Select from menu “*File*” -> “*Connect to linux partition*”. If you have some other linux operating system installed on the same computer as windows you will see there a list of linux partitions on your system. Please select the one from compact flash. You can easily recognize it after it size, in our case 125183 MB as in following picture.



The select from “*Disk*” menu “*Use removable disk X:*” where X is drive letter assigned by your windows system to CF disk. Now we are ready to make a backup image of CF disk.

Step 3

Select from “Disk” menu “*Creating virtual Hard Disk image from physical drive*”. You will be prompted to select from a list your physical device. Make sure you choose correct disk for backup and you have selected “*Create Fixed Size Virtual Hard Disk*”. You can identify it by size and by identifier CF. Take a look at the following image.



Then choose a location where image will be create and a suggestive name for easier identification (ex. Wrap-5.0.2-11.10.2005).

Step 4

Exit WinImage and safely remove Compact Flash disk from Windows and then from Card Reader.

Install it back into your computer and Power on.

Restoring backup images

Step 1

Procure an 128MB Compact Flash Card and install it into Compact Flash Card Reader. Before anything else, just to make sure CF disk is working properly, try to format it from Windows Disk Management using FAT file system and see if it works.

Step 2

Open WinImage and select from “Disk” menu “*Use removable disk X:*” where X is drive letter assigned by your windows system to CF disk.

Now we are ready to restore a backup image of CF disk.

Step 3

Select from “Disk” menu “*Restore virtual Hard Disk image on physical drive*”. You will be prompted to select from a list your physical device. Make sure you choose correct disk for restoring your image. You can identify it by size and by identifier CF. See [image on Step 3 of Backup Section](#)

WARNING: Restoring image to a physical drive will fully erase physical drive contents, so be very careful when choosing restore physical device.

When prompted chose desired backup image and you are done.

Step 4

Exit WinImage and safely remove Compact Flash disk from windows and then from Card Reader.

PowerOff your computer, install newly created CF disk and then power back on.